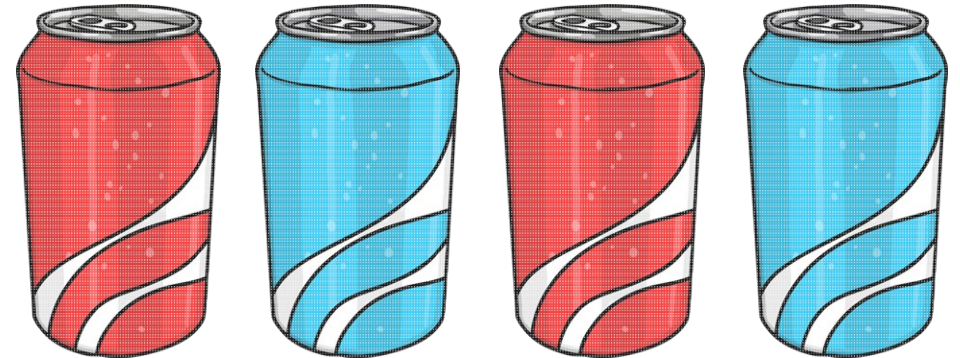




F-2 Subtraction Worded Problems Challenge Cards

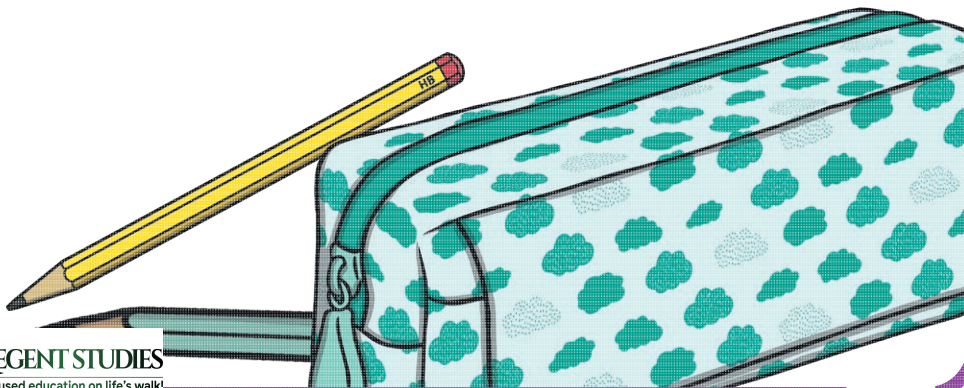
F-2 Subtraction Worded Problems Challenge Cards

If there were 10 drink cans on the shelf and 3 of them were bought by you, how many cans would be left on the shelf?



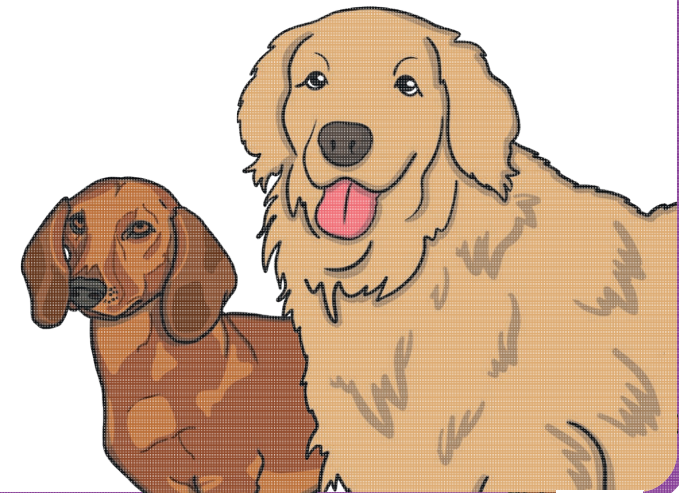
F-2 Subtraction Worded Problems Challenge Cards

If you had 8 pencils in your pencil case and you let your friend borrow 5 of them, how many would be left?



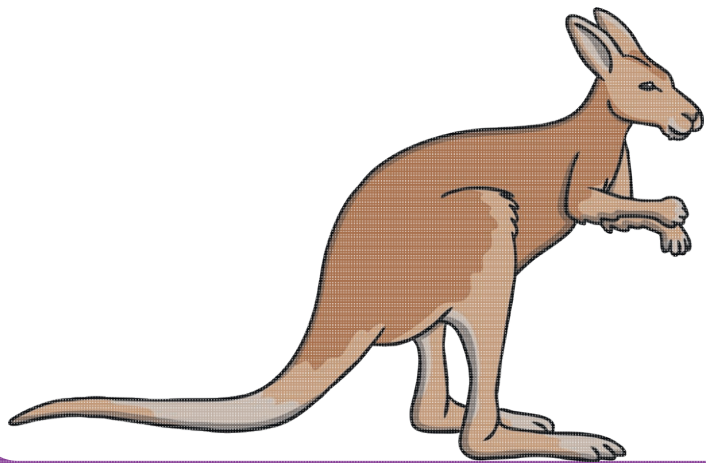
F-2 Subtraction Worded Problems Challenge Cards

If there were 12 dogs at the dog park and then 4 of them went home, how many dogs would be left at the park?



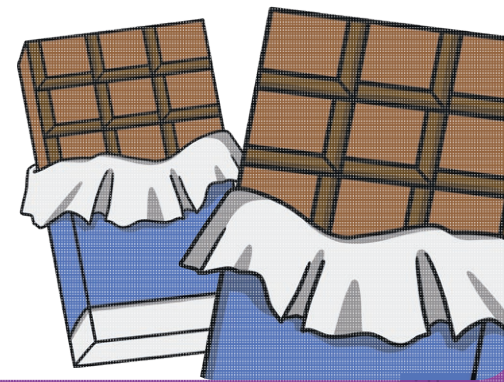
F-2 Subtraction Worded Problems Challenge Cards

If there were 14 Kangaroos in a field and 7 hopped away, how many were left in the field?



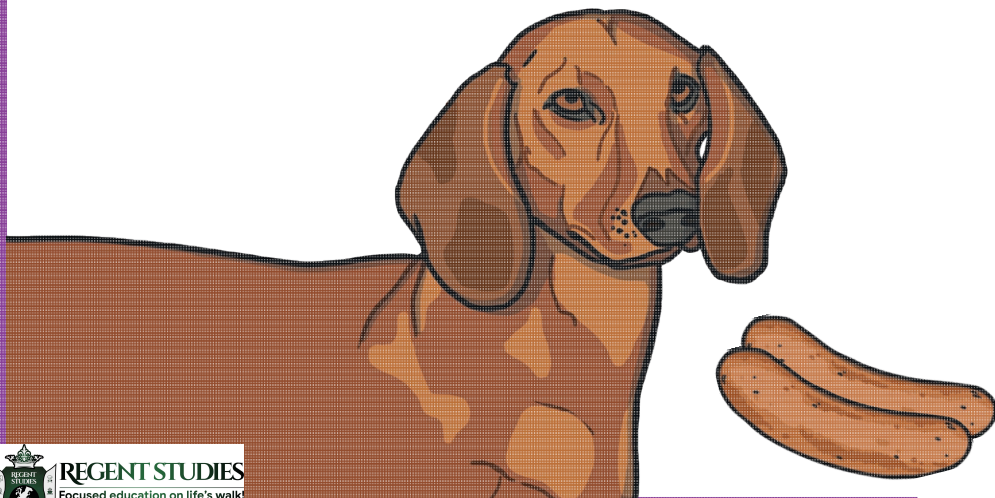
F-2 Subtraction Worded Problems Challenge Cards

If a chocolate bar had 20 pieces and you gave 4 pieces to one friend, and then 5 pieces to another friend, how many would you have left?



F-2 Subtraction Worded Problems Challenge Cards

If there were 15 sausages on a plate and a dog stole 8 of them, how many were left?



F-2 Subtraction Worded Problems Challenge Cards

The teacher had a pile of 18 books, he handed out 12 of them, how many were left?



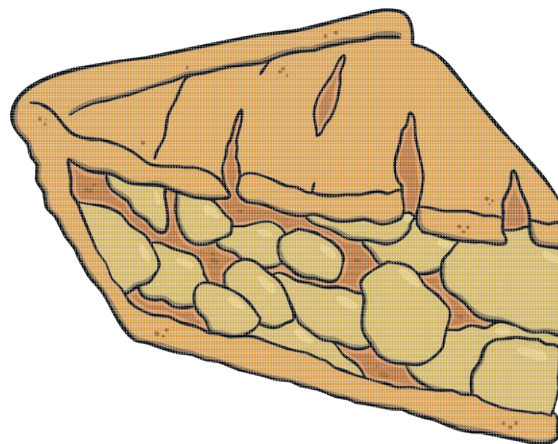
F-2 Subtraction Worded Problems Challenge Cards

There were 19 children playing in a park, 6 of them had to go home and then 10 minutes later another 7 had to go home. How many were left playing at the park?



F-2 Subtraction Worded Problems Challenge Cards

If you had 16 apples and you used 13 of them to make a pie, how many would you have left?



F-2 Subtraction Worded Problems Challenge Cards

If there were 24 birds sitting in a tree and 15 flew away, how many were left in the tree?



F-2 Subtraction Worded Problems Challenge Cards

Answer Card

$$10 - 3 = 7$$

$$8 - 5 = 3$$

$$12 - 4 = 8$$

$$14 - 7 = 7$$

$$20 - 4 = 16 \quad 16 - 5 = 11$$

$$15 - 8 = 7$$

$$18 - 12 = 6$$

$$19 - 6 = 13 \quad 13 - 7 = 6$$

$$16 - 13 = 3$$

$$24 - 15 = 9$$